

This Week's Activities

Sunday, Mar. 6 *Food Pantry*
 8:30 a.m. Adult Sunday School
 9:30 a.m. Worship Service/Nursery
 10:30 a.m. Coffee Fellowship
 Children's Choir Rehearsal
 11:00 a.m. Sunday School for All Ages
 7:00 p.m. Christian Education Meeting

Monday, Mar. 7
 7:00 p.m. Monday Rendezvous

Tuesday, Mar. 8
 7:00 p.m. Outreach Meeting

Wednesday, Mar. 9
 11:00 a.m. Linus Group
 6:00 p.m. Handbell Choir Rehearsal
 7:00 p.m. Worship Choir Rehearsal
 Beautiful Mess

Thursday, Mar. 10
 6:30 p.m. Stepping Stones
 7:00 p.m. Bible Study – Sweers

Friday, Mar. 11
 7:15 a.m. Prayer Warriors

Saturday, Mar. 12
 6:00 p.m. Dining Partners - Nest

Sunday, Mar. 13 *H.O.P.E. Offering*
 8:30 a.m. Adult Sunday School
 9:30 a.m. Worship Service/Nursery
 10:30 a.m. Coffee Fellowship
 Children's Choir Rehearsal
 11:00 a.m. Sunday School for All Ages



Please see the [church calendar online](#) for a complete list of KirkWood events and other activities in the building.

This Week's Prayer Requests

Jerry D.	Betty D.'s brother, Thomas
Haydee G.	Anne E.'s son, Gary
Steve H.	Toni F.'s brother, Jeff
Jo Ann K.	Kathy F.'s mother, Mattie
Bruce K.	Jo Ann K.'s daughter, Teresa
Dick L.	Holly K.'s sister, Barbara
Christine L.	Kim R.'s mother, Marilyn
Charlie R.	Jane S.'s daughter, Allison
Tim S.	Tim S.'s father, William
	Skipp W.'s partner, Christi

Sympathy to Jake L. and family on the death of his father



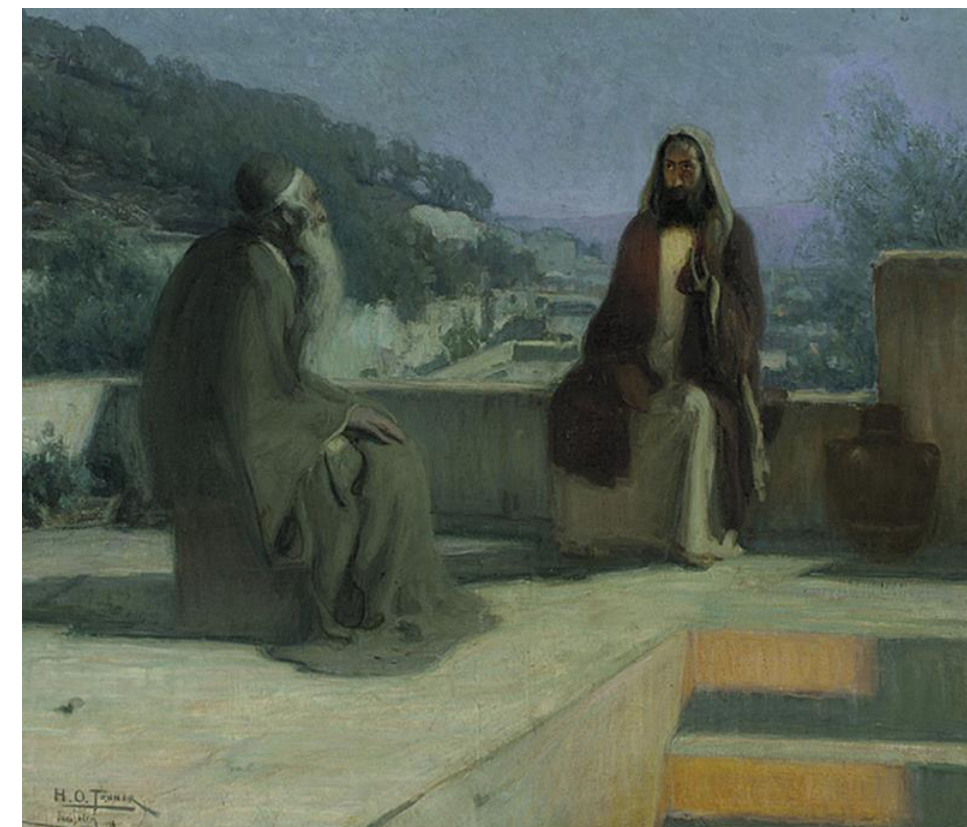
Prayer Requests and Special Needs

- Fill out one of the blue prayer cards in the pews and place it in the offering plate, call/email the church office or type your prayer request in the online friendship pad and the request will be published in the Monday Memo email.
- Fill out an off-white card in the pews and put it on the Prayer Board in the hallway. Someone at KirkWood will take it and pray for you all week long. Feel free to take someone else's prayer card and pray it during the week too.

This morning's sanctuary flowers were donated by Tony S. in memory of his mother, Thelma Sweers

WELCOME

KirkWood Presbyterian Church
 Sunday, March 6, 2022



Tanner, Henry Ossawa, 1859-1937. Nicodemus, from Art in the Christian Tradition, a project of the Vanderbilt Divinity Library, Nashville, TN.

KirkWood Presbyterian Church

A Christian Community Growing Together, Knowing, Loving, and Serving Christ, to make Him known to all

CONTACT US

1209 Hampton Hwy.
 Yorktown, VA 23693
 757-766-0343 (office)
office@kirkwoodpcusa.org

Pastor Chris is in the office in the afternoons Monday - Thursday. Please call the office or email before coming. Chris Shearer - pastorchriskwpc@gmail.com

Worship

March 6, 2022



Welcome and Announcements		Pastor Chris
Call to Worship for the 1 st Sunday of Lent		
Opening Prayer		Ben Scott
Songs	"House of the Lord" "How Marvelous"	Congregational Songs
Congregational Prayer		Pastor Chris
Hymn #333	"Seek Ye First"	Congregational Hymn
Special Music	"The Gift of Love" arr. Hal Hopson	Rich Egyud
	<i>Children ages 3 – 2nd grade dismissed for Glory Time</i>	
Sermon	Come to Jesus (Week 1) Nic at Night	Pastor Chris
Reflection	"When I Survey the Wondrous Cross" arr. Jason Krug	Handbell Choir
Preparing for the Lord's Table		
Observing the Lord's Table		
Song	"That's Why We Praise Him"	Congregational Song
Benediction		Pastor Chris

Announcements

Brunch with Pastor Chris - March 27: Once a month, Pastor Chris will be hosting a light brunch during the Sunday School hour in the library for 10-12 congregants. You can sign up to attend on the clipboard by his office door, or by emailing him - pastorchriskwpc@gmail.com. You don't need to bring anything; KirkWood will provide everything. Ideally, he'd like to have brunch with everyone who calls KirkWood home at least once a year.

Daylight Saving Time begins next Sunday, March 13th. Remember to turn your clocks forward on Saturday night.

Adult Mission Trip- Adult Mission Trip- KWPC will be headed to New Bern, NC for an adult mission trip. We will be leaving on Sunday May 1st and returning on Friday May 6th. You may sign up for the whole week or part of the week as your schedule allows. We will be staying at the New Hope Volunteer Village and working with Craven County Disaster Recovery Alliance (CCDRA) to make repairs to homes that were impacted by the hurricanes over the last few years. The cost will be \$25.00 per night with a total depending on how long you stay. KWPC mission funds will cover the cost of meals and transportation. Because the facility is bunk style housing, at this time, they are requiring that everyone provide proof of vaccination. You can sign up on the Mission bulletin board in the hall or contact Jamie Reno at h2orenos@gmail.com.

Easter Lilies – Today is the last day to order lilies for Easter - \$12 each. You can purchase them in honor/memory of loved ones. Please sign up on the list in the Narthex or email the church office (office@kirkwoodpcusa.org) with the number of lilies and the dedication. You also have the option to pay for the lilies online at <https://secure.myvanco.com/L-Z213>.



Lent 2022 Sanctuary Decor: The Lenten cross display at the front of the sanctuary offers several traditional symbols for the Lenten season. The color purple reflects both the royalty and suffering of Jesus during the crucifixion (Mark 15:17-20, John 9:2-3). The stones refer to Jesus' 40 days of temptation in the desert, from which the length of Lent is derived; specifically, the stones refer to Jesus' hunger and the temptation to turn the rocks into bread (Matthew 4:3). The water jug represents the act of washing oneself and being cleansed, pointing to Lent as a season of repentance. Likewise, the sackcloth is a well-known biblical sign of humility and penitence. Also, each week of our series, "Come to Jesus," we'll add a new symbol each Sunday of Lent representing that week's character study: today, it's a candle, representing Nicodemus who came to Jesus at night (John 3). A special "thank you" to Wilma Mitchell for sewing the drapes you see in the display.



KirkWood Dining Partners, that's anyone who enjoys good food and fellowship, are going to Nest Kitchen and Taphouse in Kiln Creek on **Saturday, March 12** at 6 pm. The restaurant is located at 1003 Brick Kiln Blvd. in Newport News. Please join us for an evening out with your fellow KirkWoodians and feel free to invite others. You can sign up in the narthex or send an e-mail to Cindy Williamson at cwillic114@gmail.com

One Great Hour of Sharing

We will be collecting for OGHS from March 2nd - April 17th. OGHS supports three different agencies. Presbyterian Disaster Assistance works with communities as they recover from nature or human disaster. Presbyterian Hunger Program takes action to alleviate hunger so all can be fed. Self-development of People invests in communities responding to their oppression and poverty and educates Presbyterians about the impact of these issues. There are a few different ways to donate - fish boxes in the Narthex and envelopes in the pews. There is also literature in the Narthex. Every penny will make a difference.

Offering Counter - We are seeking an offering counter who can help count about once a month (after worship on Sundays). If you are interested, please contact Regina Harris (regina.harris@rivhs.com).

KirkWood Silver will gather on Thursday, March 17, at 11:30, in the Fellowship Hall for our Pastor and Pizza Luncheon (finally!). Please sign up in the Narthex beginning February 27. Don't forget to bring questions for our pastor to answer so that we can know him better! Invite someone who is new to KirkWood or new to KirkWood Silver! Contact Wanda Birch if you have questions, at 757-868-8651 or wandjbirch@verizon.net.

Monthly Mission Collections

Today, March 6th, is the first Sunday of the month and every first Sunday is our **Food Drive**. We collect non-perishable food and/or money for the Food Closet at St. Luke's Methodist. Also, the second Sunday is our collection for **HOPE** (Helping Other People Eat).

Sanctuary Flowers

If you would like to dedicate flowers in honor/memory of someone or an occasion, please sign up now. We don't have anyone signed up for the next several weeks. The **Flower Sign-up list** is [online here](#) (or call/email the office to sign up). After worship, you have the option to take some of the flowers home or donate them to be taken to the sick and shut in. Flower arrangements are \$35.00 per week. Send a check with "Flowers" on the memo line or pay online [here](#).