

## [This Week's Activities](#)

### **Sunday, May 28**

- 8:30 a.m. Adult Sunday School
- 9:30 a.m. Worship Service, Nursery
- 10:30 a.m. Coffee Fellowship, Joyful Noise Rehearsal
- 11:00 a.m. Sunday School for All Ages

### **Monday, May 29** *Church Office Closed*

### **Tuesday, May 30** *Group Departs for Israel*

- 7:00 p.m. Planning & Leadership Development Meeting

### **Wednesday, May 31**

- 9:00 a.m. Gentle Yoga
- 11:00 a.m. Linus Group
- 7:00 p.m. Beautiful Mess

### **Thursday, Jun 1**

- 7:00 p.m. Bible Study – Sweers, Gen C

### **Friday, Jun 2**

- 7:15 a.m. Men's Prayer Group

### **Saturday, Jun 3** *No Scheduled KirkWood Activities*

### **Sunday, Jun 4** *Food Pantry Sunday*

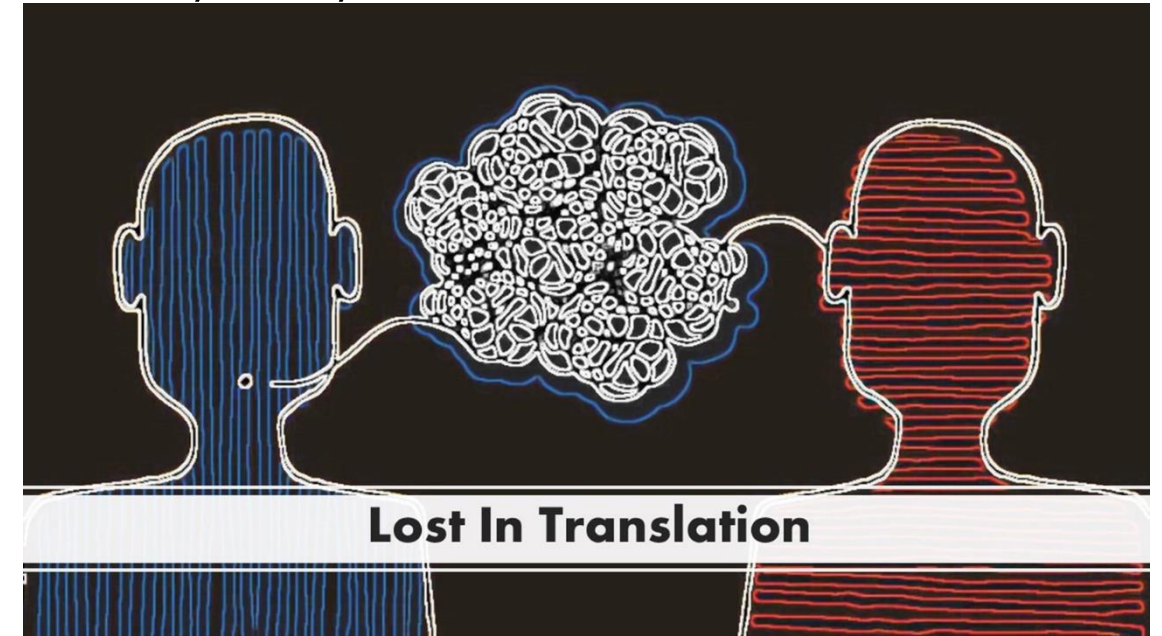
- 8:30 a.m. Adult Sunday School
- 9:30 a.m. Worship Service, Nursery
- 10:30 a.m. Coffee Fellowship, Joyful Noise Rehearsal
- 11:00 a.m. Sunday School for All Ages
- 4:00 p.m. KirkWood Youth Group (KYG)

Please see the full [church calendar online](#).

## **WELCOME**

KirkWood Presbyterian Church

Sunday, May 28, 2023



## ***KirkWood Presbyterian Church***

A Christian Community Growing Together, Knowing, Loving, and  
Serving Christ, to make Him known to all

### **CONTACT US**

1209 Hampton Hwy.  
Yorktown, VA 23693  
757-766-0343 (office)

[office@kirkwoodpcusa.org](mailto:office@kirkwoodpcusa.org)

Pastor Chris Shearer

[pastorchriskwpc@gmail.com](mailto:pastorchriskwpc@gmail.com)

# Order of Worship



Welcome		Pastor Chris Shearer
Announcements		
4 <sup>th</sup> Sunday Stewardship Spotlight – A Five Month Financial Report		Bruce Knight Pastor Chris Shearer
Handbell Solo	“Every Time I Feel the Spirit” arr. Barbara Bocker and Guy Shepherd	Ann Brown
Call to Worship		Ben Scott
Opening Prayer		
Anthem	“Fill-a Me Up!” Pepper Choplin	Worship Choir Rich Egyud, Soloist
Songs	“Amazing Grace (My Chains Are Gone)” “Never Gonna Let Me Go”	
Congregational Prayer		Pastor Chris Shearer
Special Music	“Come Down O Love Divine” arr. Fernando Ortega	Ben Scott
Children ages 3 – 2nd grade dismissed for Glory Time		
Sermon	Lost in Translation (Week 2): Who God Is and Who God Isn’t	Pastor Chris Shearer
Song	“Glory to God Forever”	
Benediction		Pastor Chris Shearer

# This Week's Prayer Requests

Ruth D.	Linda B.’s brother, Dan
Catherine G.	Betty D.’s brother, Thomas
Gloria G.	Betty D.’s sister, Madelyn
Steve H.	Anne E.’s son, Gary
Dick L.	Toni F.’s brother, Jeff
Gerry L.	Regina H.’s parents
Julie L.	Jo Ann K.’s daughter, Teresa
Christine L.	Lisa N.’s dad, Paul
April M.	Art & Jody P.’s daughter, Alise
Mike M.	Pepper W.’s brother, Richard
Peggy P.	Pepper & Sandy W.’s son, Steve
Kim R.	Skip W.’s partner, Christi
	Robin W.’s mother
	Lisa W.’s mother



## Prayer Requests and Special Needs

Fill out one of the blue prayer cards in the pews and place it in the Offerings & Prayer Requests box, call/email the church office, or type your prayer request when you Check In online and the request will be published in the Monday Memo email.

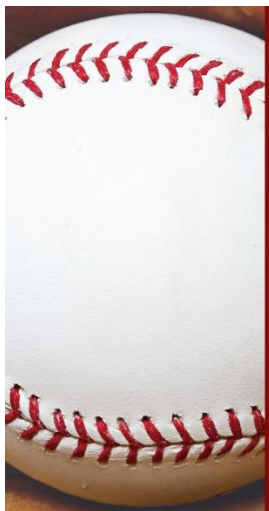
### Julie Thro visit

Julie Thro, KirkWood's beloved former associate pastor, will be visiting the area June 10-12. For those of you who don't know her, in her 4 years at KirkWood, she was a driving force behind starting the Pumpkin Patch, the Praise Band, and Mission Trips with the youth. She is officially coming to deliver the final sermon at Lacrosse Memorial Presbyterian church as it closes on Sunday, June 11 at 3:00 pm. You will have 2 opportunities to visit with Julie and her husband, Bill, that weekend. She will be attending KirkWood's service on Sunday, June 11 at 9:30 am followed by the Fellowship time.

Additionally, those that know Julie are invited to Janet and Bruce Knight's house (120 Laydon Way in Poquoson) for a gathering with Julie and Bill on Saturday, June 10 at 6:00 pm. Burgers and hotdogs will be provided. If you could bring a side dish or dessert, please RSVP to Janet and Bruce with the number of people attending and what dish you will be bringing. There will be some drinks provided, but feel free to bring your own beverages of choice.

Contact info: Janet Knight - 757-303-4253 or Bruce Knight - 757-303-4252

Sign up for **sanctuary flowers** [online here](#) (or call/email the office to sign up). You can dedicate flowers to commemorate a special occasion or in memory/honor of someone. After worship, flowers will be taken to the sick and shut in. Flower arrangements are \$35.00 per week. You can [pay online by clicking here](#) or send a check with "Flowers" on the memo line.



Join your KirkWood friends and family for a night out at the old ballpark when the Peninsula Pilots face off against the Martinsville Mustangs on Saturday, June 17th at 7 PM, at War Memorial Stadium in Hampton. Tickets are only \$8 for adults and \$5 for active-duty military, seniors 65 and older, and children 12 years and younger. Food and drink concessions are available at the park. For those desiring transportation, the KirkWood Van will be available. Sign up in the Narthex or [on-line by clicking here](#). Play Ball! (POC is Lew Goodman).

## Announcements



The church office will be closed tomorrow, May 29<sup>th</sup> for Memorial Day.

Did you miss picture day?

Today is the last chance to get your photo taken for the new directory. Charlie Reece will be available in the Narthex after worship. Please stop by for a moment. We'd love to have a photo of everyone for the new directory.



Today is the deadline to submit information about graduates. If you, or your child, is a senior in high school or college and will be graduating this spring (or graduated last fall), please contact the office ([office@kirkwoodpcusa.org](mailto:office@kirkwoodpcusa.org) or at 757-766-0343). Let us know the name of the student, the school from which they will be graduating, future plans (if known) and a senior/graduation picture. We will also recognize our high school graduates during worship on June 11<sup>th</sup>.

This morning's sanctuary flowers were donated by Cindy W. in memory of those who have served our country

**Newsletter Deadline** - The deadline for the June Kronicle is TODAY, May 28<sup>th</sup> at 3:00 p.m. Please send all newsletter submission to Kathryn Kelchner at [kroniclesubmission@gmail.com](mailto:kroniclesubmission@gmail.com). (Please note that this is a new email address.)

Is your regular small group going on break? Are you looking for a flexible, short-term study? Do you want to stretch your knowledge of the Bible beyond what you read to the little loved ones in your life? Join Jeannine Scott in a summer small group. Ideas include using Peter Enns podcast or books or the newly released "Bible Stories for Adults" lessons. The timing can be whatever is best for the group. Let Jeannine know or sign up in the Narthex.



Unlock the potential of the KirkWood kid's faith today! We are especially looking for volunteers who are excited to get to know the strengths of our children and youth and model Jesus' love to them. There are opportunities behind the scenes too. Speak with Rachel Fisher and Jeannine Scott to see how you can help. If you have helped in the past, be on the lookout for an email to update your safety training.

### KirkWood Walking Group returns to the Noland Trail

Back by popular demand, the KirkWood Walking Group will return to the beautiful Noland Trail at the Mariner's Museum Park on Saturday June 10<sup>th</sup> at 9:00 a.m., so we can beat the heat. On our last visit there in January, it was cold with snow flurries. We are highly confident that there will be no snow in June!!

There will be 3 walking options:

- 1 to 2-mile option for gentle walkers
- 3-mile option
- robust 5-mile option through a challenging wooded trail

We'll meet in the first parking lot on the right, just before the museum. Join us as we enjoy the beauty of nature and the joy of each other's company. For questions contact Janet Knight at 757-303-4253 or Bruce Knight at 757-0303-4252.

## Mission News

**Little Free Food Pantry** - The Mission Committee is introducing The Little Free Food Pantry out on the lawn. Our congregation will soon be stocking it with non-perishable sealed items, foods, such as cereals, rice, beans, canned meats, peanut butter, paper products, and so on. When you go shopping, buy a little extra and put it in the pantry the next time you come by church. Take what you need, leave what you can. This pantry is part of continuing the church's food outreach for the community. You will be spreading a little bit of joy to those who need help.

We need help with our Vet Meal Mission. You can help with this ministry by providing meals for 2 Vet homes (5 men in each home) every Monday. (The meals can be homemade or purchased at a store/restaurant.) Sign up in the Narthex or [online by clicking here](#). Contact Zora Parker or Gloria Griffin if you can help.



### Opportunities with our new partner THRIVE:



We are collecting plastic grocery bags, such as those you get from the grocery stores. (We cannot accept food wrappers, shower curtains, newspaper bags, etc.) Bags may be placed in the white plastic bin in the hallway by the fellowship hall.



Another opportunity will be collecting shoes, any type, any size and for men, women, and children. There is also a **red** plastic bin in the hallway headed to the fellowship hall. So, empty out your shoe closets and bring them to church!!!!